

Linc PTT Emergency Call for Sonim phones

1/9/2019



Orange Emergency Button



Sonim XP8



Sonim XP5s



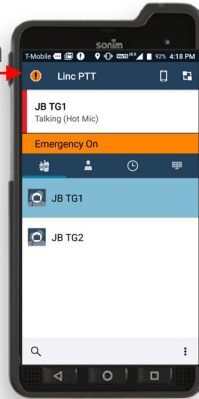
User must hold emergency button for a few seconds to initiate emergency call. The target of emergency call is pre-configured, typically the emergency target is your selected talkgroup. The emergency target can be changed by an Administrator. The emergency call can be initiated with locked screen, PTT app in foreground or background, and from any application view.

Emergency Call Initiation



Emergency Alarm Indication

- Emergency Alarm is indicated by orange icon.
- No Emergency Alarm is indicated by white icon.

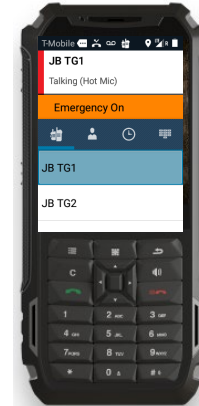


Sonim XP8

Emergency Call

Emergency Alarm Indication

- “Emergency On” is Emergency Alarm
- “Emergency” is Emergency Call is still in progress (Emergency Alarm has been cleared).
- No orange bar indicates no emergency alarm or call.



Sonim XP5S

Emergency Call

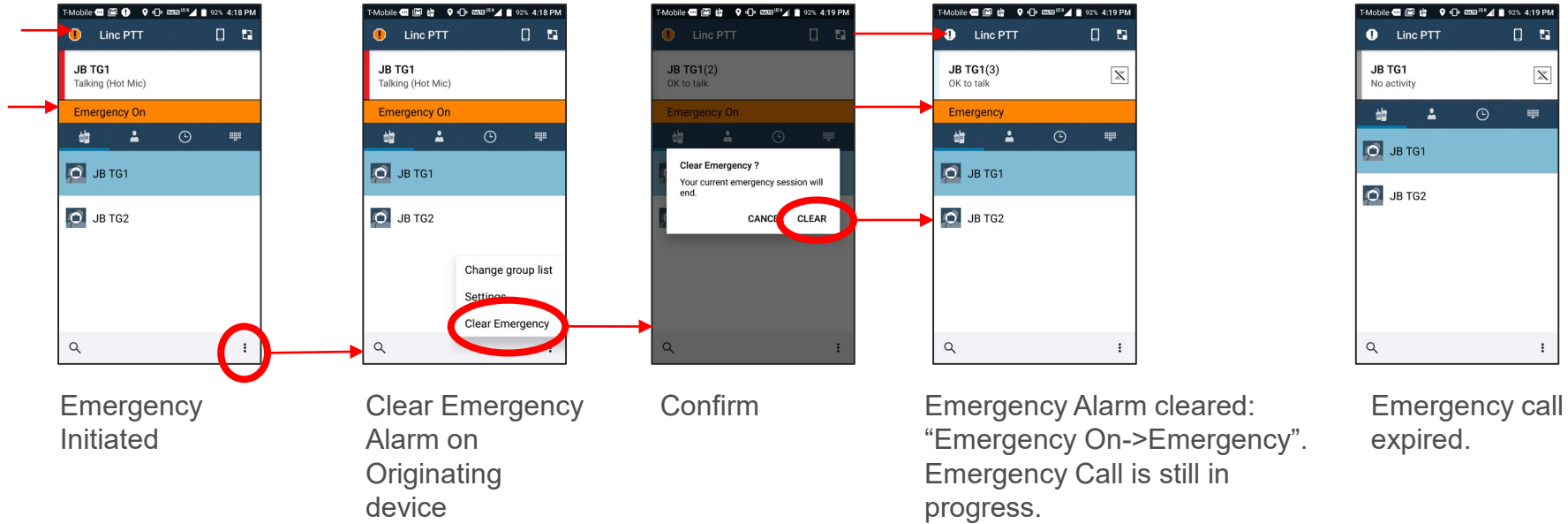
Emergency Alarm Indication

Default emergency target is the user’s selected talkgroup. This may be changed by an Administrator.

While emergency alarm is active on originating device (indicated by “Emergency **On**”), all calls will be treated as emergency calls. Originator must clear the emergency alarm on originating device. Alternatively, a dispatcher assigned to that organization can clear the emergency alarm.

Clearing Emergency Alarm on Sonim XP8

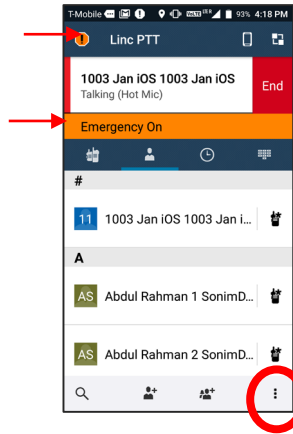
Emergency target is a talk group



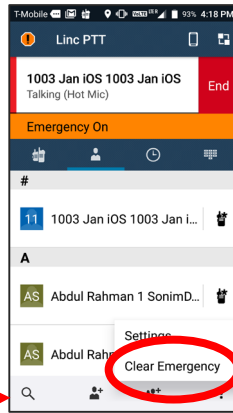
While emergency alarm is active on originating device (indicated by “Emergency On”), all calls will be treated as emergency calls. Originator must clear the emergency alarm on originating device. Alternatively, a dispatcher assigned to that organization can clear the emergency alarm. Note, the emergency call cannot be terminated. The emergency call will expire after certain amount of inactivity time.

Clearing Emergency Alarm on Sonim XP8

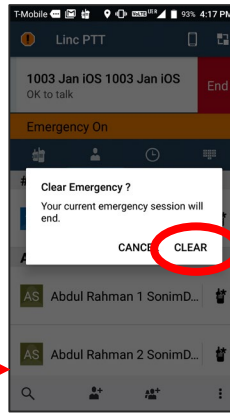
Emergency target is an Individual



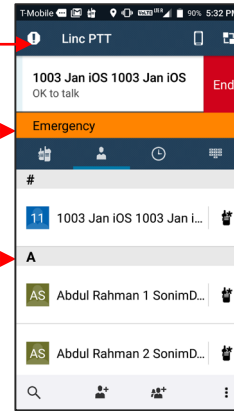
Emergency Initiated



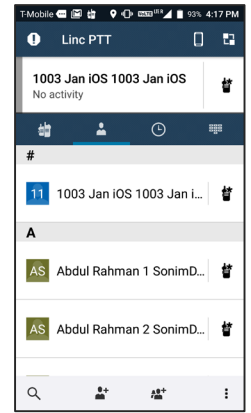
Clear Emergency Alarm on Originating device



Confirm



Emergency Alarm cleared: "Emergency On->Emergency". Emergency Call is still in progress.



Emergency call expired.

While emergency alarm is active on originating device (indicated by "Emergency On"), all calls will be treated as emergency calls. Originator must clear the emergency alarm on originating device. Alternatively, a dispatcher assigned to that organization can clear the emergency alarm.

Clearing Emergency Alarm on the Sonim XP5S

Emergency target is a talk group



While emergency alarm is active on originating device (indicated by “Emergency **On**”), all calls will be treated as emergency calls. Originator must clear the emergency alarm on originating device. Alternatively, a dispatcher assigned to that organization can clear the emergency alarm.

Note, the emergency call cannot be terminated. The emergency call will expire after certain amount of inactivity.

Clearing Emergency Alarm on Sonim XP5s

Emergency target is an Individual



While emergency alarm is active on originating device (indicated by "Emergency **On**"), all calls will be treated as emergency calls. Originator must clear the emergency alarm on originating device. Alternatively, a dispatcher assigned to that organization can clear the emergency alarm.